

Link® MORTUARY EQUIPMENT

SINGLE DECKS | DOUBLE DECKS
SUBURBAN RAMPS
ACCESSORIES



LINKMORTUARYEQUIPMENT.COM



SS150 Single Deck

FITS: MID-SIZE VANS, FULL-SIZE VANS & SUBURBAN VEHICLES

- Carries two standard cremation containers, two cots, one air tray, or one casket
- Transforms your vehicle into a first call vehicle with no modification
- Upgrade to SS150XL model to include four casket rollers

*Image of SS150XL on front cover



SR75 Minideck

FITS: SUBURBAN VEHICLES

- Protects your bumper with a professional appearance
- Ramp hinges up and out of the way when doors are closed to allow all the seats to be used
- No drilling or vehicle modifications necessary for install
- Easy to load and secure stretchers



SR50 Suburban Ramp

FITS: SUBURBAN VEHICLES

- Protects your bumper with a professional appearance
- Ramp hinges up and out of the way when doors are closed
- Snaps into place in seconds
- Solid 3/16" aluminum ramp protects rear bumper from stretcher damage



HD150 Hearse Deck

- Durable aluminum framework
- Rubber mat extends over bumper
- Protects hearse floor
- Easy to load and secure stretchers
- Lightweight at 50 lbs.

CX100 Exhaust Fan

- For use in the rear of vehicles and controlled from the front cab area
- Displaces air at a rate of 100 CFM



CT400 Casket Truck

- Use as a utility and display truck (D400 Drape Attachment available)
- Powder-coated steel framework

D400 Drape Attachment

- Made for CT400 Casket Truck
- Available in four colors: Black, Burgundy, Hunter Green, and Navy Blue

CDS300 Casket Drape

- Portable frame & drape to hide casket trucks (folds to 3" deep)
- Available in four colors: Black, Burgundy, Hunter Green, and Navy Blue



FC40 Flower Cart

- Easily transport 16 plants at a time
- Includes two FT2234 flower trays
- 24.25" W x 34.5" L x 40.5" H

FT2234 Flower Tray

- Heavy duty but lightweight tray
- 22" W x 34" L x 8" H



DD-EX2 Double Deck

FITS: MID-SIZE VANS

- Carries four cots, three cremation containers, or two air trays
- Powered upper deck raises and lowers in seconds
- Available with two deck lengths for vehicles with a longer wheelbase
- 600 lb. capacity on upper deck
- Bulkhead required



DD2000-XLC Double Deck

FITS: FULL-SIZE CARGO VANS

- Carries four standard cremation containers, four cots, two air trays, or two caskets
- Fits a standard and oversized cot side-by-side
- Powered upper deck with safety latch raises and lowers in seconds
- Bulkhead required



DD4000 Casket Transporter

FITS: FULL-SIZE CARGO VANS

- Allows four caskets to be transported safely and easily
- Powered upper deck tilts up and down for loading and unloading
- Does not require commercial drivers license (state requirements vary)
- 600 lb. capacity on upper deck
- Bulkhead required



Bier Pins Kits

- Adjustable or stationary bier pins
- Used with bier pin plates to secure cremation containers, air trays, or caskets



Bier Pin Plates

- Available with 1, 2, 5, or 10 holes
- For use with 1/2" round hole with hexagon cut out bier pins



Glide Strips

- Makes loading much easier
- Available in 8' lengths and can be cut down to size



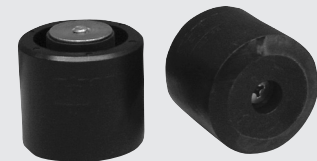
Cot Cups

- Solid cast aluminum construction
- Prevents stretchers from shifting



Roller Kits

- Rollers for loading caskets and air trays
- Roller frame is totally enclosed



Cot Post Tip

- Cot tip protects the cot and the surface it comes in contact with (Can pair with the CPT20 cot cup)

VEHICLE FIT GUIDE

Make	Model	Year Wheelbase Roof Height	SR50	SR75	SS150 SS150XL		DD-EX2	DD2000 XLC	DD4000
			7810A003	78113A00 78113A01 78113A02	STD 7124B000 7124B001	EXT 7135X004 7135X005	7223B001 7223B003	7226A000	7225D000 7225D001 7225D002
Chevrolet GMC Cadillac	Express / Savana 1500	1996-Present				X			
	Express / Savana 2500	1996-Present				X		X	
	Express / Savana 3500	1996-Present				X		X	
	Suburban Yukon XL Escalade ESV	2007-2014		X	X		X		
2015-2020				X		X			
2021-Present				X		X			
Chrysler	Town and Country	2009-2016			X				
	Pacifica	2017-Present			X				
Dodge RAM	ProMaster 1500 Cargo Van	118 Standard & High				X			
	ProMaster 1500, 2500, & 3500 Cargo Van	136 Standard & High				X			
	ProMaster 2500 & 3500 Cargo Van	159 High				X		X	
	ProMaster 3500 Cargo Van	159 EXT High				X		?	X
	Caravan	2009-2020			X				
Ford	E-Series Cargo Van	1992-2015				X		X	
	Transit 150 Cargo Van	Low & Mid Roof				X		X	
	Transit 250 Cargo Van	Low, Mid, & High Roof				X		X	
	Transit 350 Cargo Van	Low, Mid, & High Roof				X		X	
	Expedition EL	2007-2017				X			
Honda	Odyssey	1999-Present			X				
Hyundai	Entourage	2007-2009			X				
Kia	Carnival	2021-Present			X				
Nissan	NV 1500 Cargo Van	Standard				X		X	
	NV 2500 Cargo Van	Standard				X		X	
	NV 2500 Cargo Van	High				X		X	X
	NV 3500 Cargo Van	Standard				X		X	
	NV 3500 Cargo Van	High				X		X	X
	Quest	2004-2009			X				
Mercedes-Benz	Sprinter 2500 Cargo Van	144 Standard & High				X		X	X
	Sprinter 3500 Cargo Van	170 Standard & High				X		X	X
	Sprinter 3500 EXT Cargo Van	170 EXT High				X		?	
	Metris Cargo Van	126 or 135 WB			X	X	X		
Toyota	Sienna	2004-Present			X				

"X" Fits In Standard Vehicle. "?" Investigation Required.

NOTE: Double deck installation requires a van partition bulkhead. Vehicles with rear air conditioning units and/or dual rear-wheel packages will restrict the installation of this product.

WARNING: Link products must be professionally installed by a trained technician when being placed into an Electric Vehicle (EV). Electric Vehicles have higher voltage batteries and cables and drilling into Electric Vehicles may cause serious bodily harm and possibly death. Link is not responsible for optional configurations or equipment that restrict the installation of this product in any way. Consult OEM body builder guides for additional installation guidelines.