

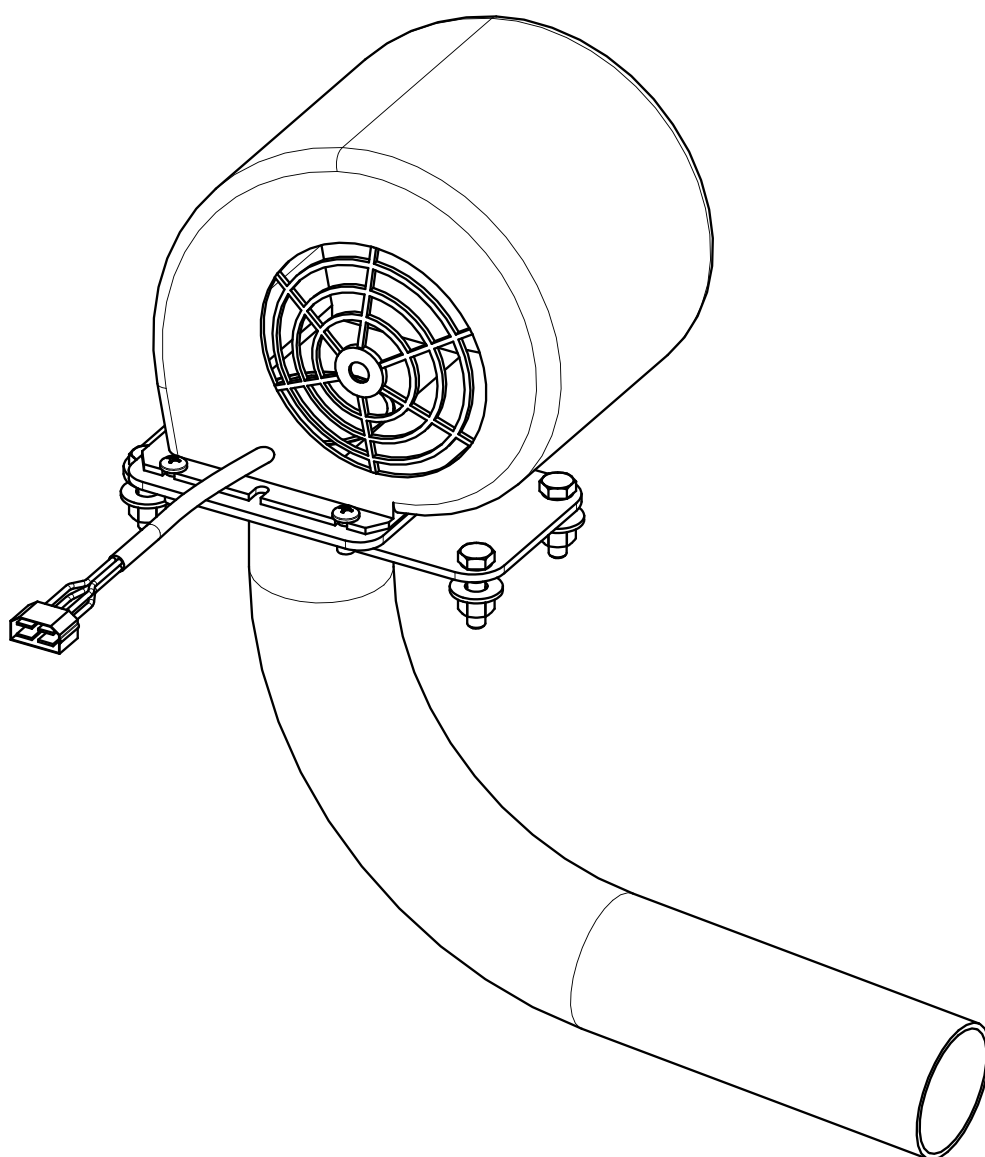


223 15th St. N.E.  
Sioux Center, IA USA  
51250-2120  
[www.linkmortuaryequipment.com](http://www.linkmortuaryequipment.com)

**QUESTIONS?  
CALL CUSTOMER  
SERVICE  
1-800-248-3057**

# INSTALLATION INSTRUCTIONS

## EXHAUST FAN (7802200A)



The **Link Exhaust Fan** is for use in FORD, CHEVROLET AND SPRINTER VANS.

Link Mortuary Equipment, a division of Link Mfg., Ltd.  
[www.linkmortuaryequipment.com](http://www.linkmortuaryequipment.com)

78022004  
AUG 3, 2023






## 1. INTRODUCTION

These instructions are intended to help you get the best results from the Exhaust Fan and to operate it safely. The manual is intended solely for use with this product.

All information in this manual is based on the latest information available at the time of printing. Link Manufacturing reserves the right to change its products or manuals at any time without notice. Contact Link Mortuary Equipment at (800) 248-3057 for information on recent changes to products.


Defective or damaged components should be returned to Link with a pre-arranged Returned Goods Authorization (RGA) number through the Customer Service Department. The damaged or defective component may then be replaced if in compliance with warranty conditions.

## 2. SAFETY SYMBOLS, TORQUE SYMBOL, and NOTES

 <b>DANGER</b>	<b>DANGER</b> indicates a hazardous situation which if not avoided, will result in death or serious injury.
 <b>WARNING</b>	<b>WARNING</b> indicates a potentially hazardous situation which, if not avoided, could result in death or serious injury.
 <b>CAUTION</b>	<b>CAUTION</b> indicates a potentially hazardous situation which, if not avoided, could result in minor or moderate injury.
 <b>NOTICE</b>	<b>NOTICE</b> indicates a potentially hazardous situation which, if not avoided, may result in property damage.
 <b>TORQUE</b>	<b>TORQUE</b> indicates named fasteners are to be tightened to a specified torque value.
<b>NOTE:</b>	A Note provides information or suggestions that help you correctly perform a task.

## 3. SAFE WORKING PRACTICES

 **CAUTION** When handling parts, wear appropriate gloves, eyeglasses, ear protection, and other safety equipment.

 **CAUTION** The vehicle owner is responsible for ensuring the repair can be completed safely with respect to bloodborne pathogens or other potentially infectious material.

## 4. OPERATION GUIDELINES

4.1 In order for this Exhaust Fan to operate properly, it must be operated within the parameters specified by Link.

## 5. PRE-INSTALLATION

5.1 Refer to the Parts List in (Figure 1) to ensure that your Exhaust Fan contains all of the listed components.

## 6. INSTALLATION

6.1 Using the supplied template (**AT THE BOTTOM OF THE PAGE**) center punch and drill four 1/4" holes, and one 2" round. hole.

6.2 Prior to installation of the Exhaust Fan Bracket be sure to use silicone sealant on the bottom of mount plate. Using the supplied 1/4 X 1 hex head cap screws, flat washers, and nylock hex nuts attach the Exhaust Fan Bracket to the floor of the van.

 **TORQUE** to 75-100 IN-LBS.

6.3 Using the four 10-24 x 1/2 Philips machine screws attach the Exhaust Fan to the Exhaust Fan Bracket.

6.4 Place the toggle switch in the cab of the vehicle. (Mount to the side of the driver's seat mount or another location where it will not be hooked as the driver enters or exits the van.)


**NOTE: Sprinter and GM cargo vans have a positive stud terminal located under the driver's seat. Ford vans connect to the positive side of the starter motor relay. Refer to the vehicle owner's manual for specifics. An inline fuse is provided, and should be placed no further than 12 in. from the positive connection.**

A. If an engine compartment location is used, run the power wire through the floor of the vehicle, along the frame rail, and into the engine compartment. Being sure to avoid all heat and rubbing hazards.

B. Use rubber grommets and wire loom on all through-floor connections to prevent damage to the wire caused by rubbing.

C. Do not route or attach wire to fuel or brake lines, steering linkages, or exhaust/heat shields. Secure the power wire using the provided terminal ring.

6.4 Run the red wire from toggle switch to the battery terminal.

 **WARNING** Do not connect the power up at this time. Trim off excess red wire. Do not throw this away you will need this for connecting the toggle switch to the fan.

6.5 Attach the second red wire to the toggle switch and choose the appropriate terminal on the fan connector. Orange max., red mid., yellow min..

6.6 Attach the black ground wire from the fan to the ground attached to the bolt on the exhaust fan bracket.

6.7 Connect the red power wire to the battery terminal at this time.

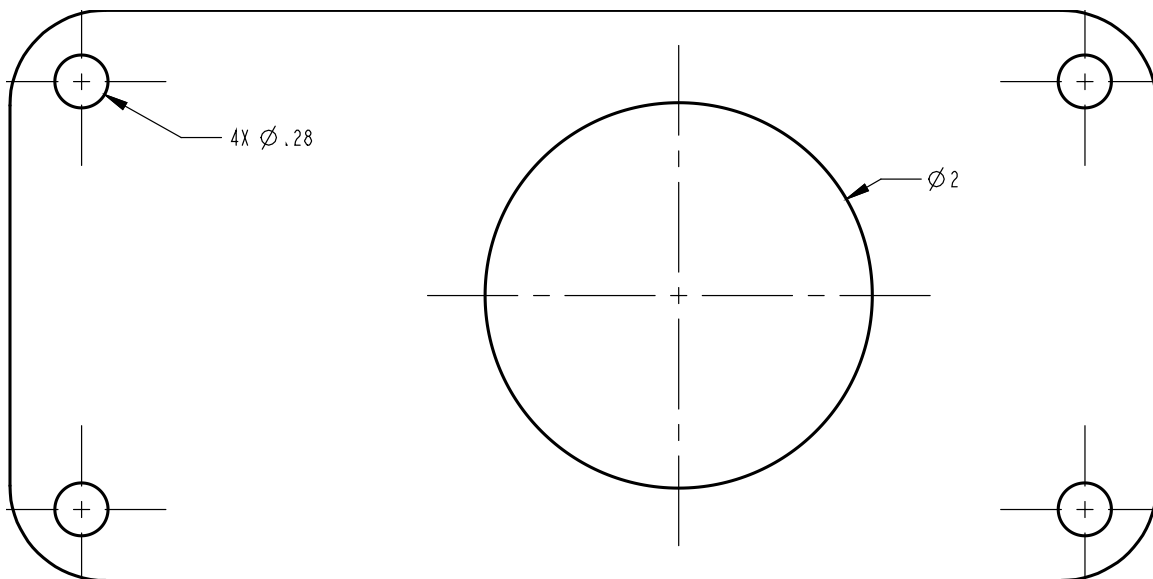
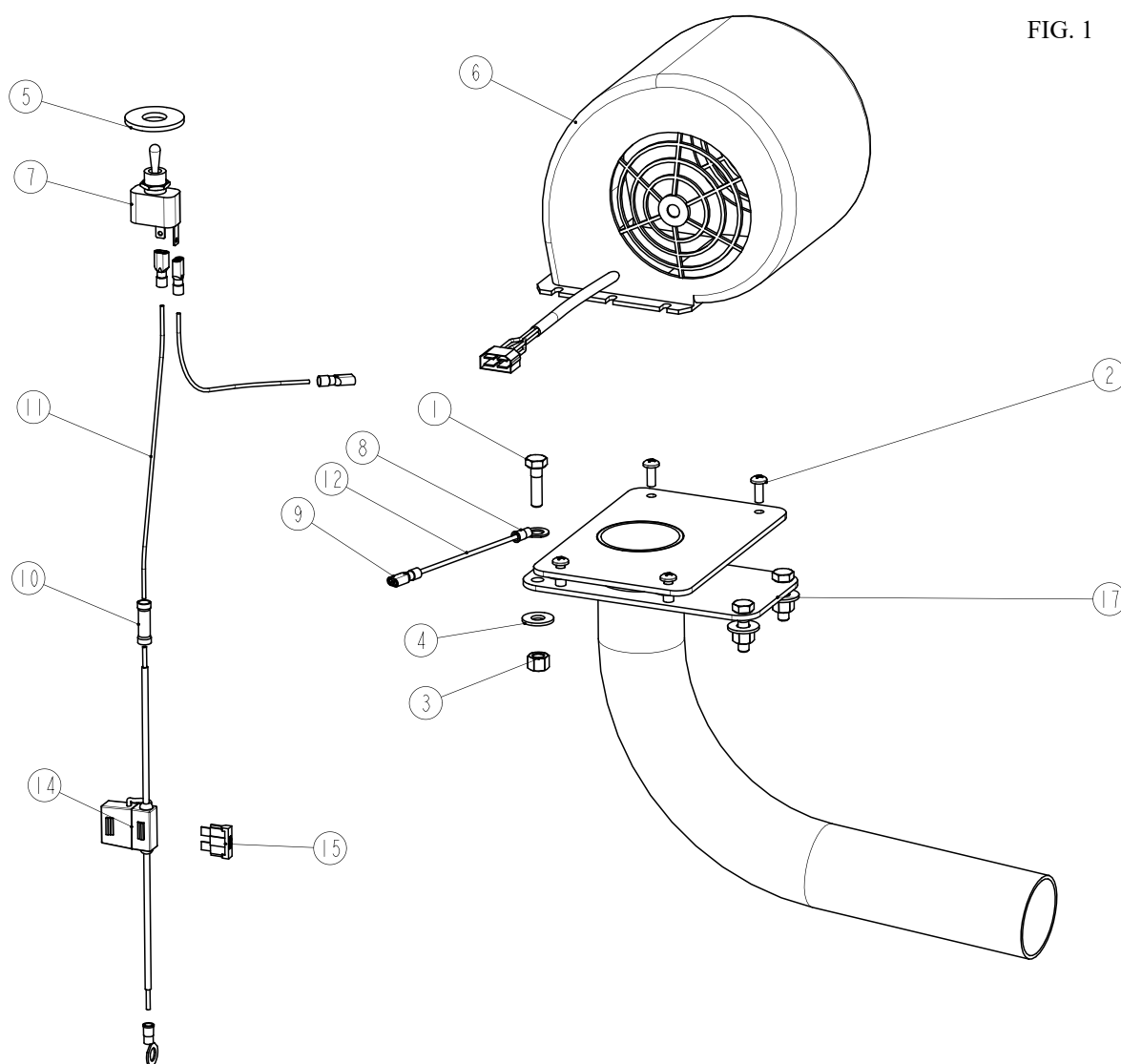


FIG. 1



ITEM	PART #	DESCRIPTION	QTY	ITEM	PART #	DESCRIPTION	QTY
1	14010808	1/4 X 1 UNC HEX CAP SCR (GR 5)	4	10	15051106	CONNECTOR-BUTT (16-14G)	1
2	144J0B04	10-24 X 1/2 UNC CR PH MACH SCREW, SS	4	11	15051503	PRIMARY WIRE 14 GA. (RED)	21 ft.
3	14780800	1/4 UNC HEX NYLOCK NUT (GR B)	4	12	15051504	WIRE-PRIMARY, 14 GA. GPT (BLACK)	4 in.
4	14870800	1/4 TYPE A PLAIN WASHER	4	13	15051800	PLASTIC LOOM CLAMP-1/8	3
5	14871600	1/2 TYPE A PLAIN WASHER	1	14	15050004	HOLDER-FUSE, INLINE	1
6	15040307	FAN-EXHAUST	1	15	15051867	FUSE-AUTOMOTIVE, 30 AMP	1
7	15050204	TOGGLE SWITCH	1	16	15060046	#8-18 X 1/2 CR PAN HEAD SCREW (SELF DRILL)	3
8	15050627	TERMINAL-RING, 5/16 STUD, 12-10	2	17	78022000	BRACKET-EXHAUST FAN	1
9	15051021	CONNECTOR-SLIDE, FEMALE, 12-10	4				



223 15TH ST. NE, SIOUX CENTER, IA 51250  
1-800-248-3057  
[www.linkmortuaryequipment.com](http://www.linkmortuaryequipment.com)