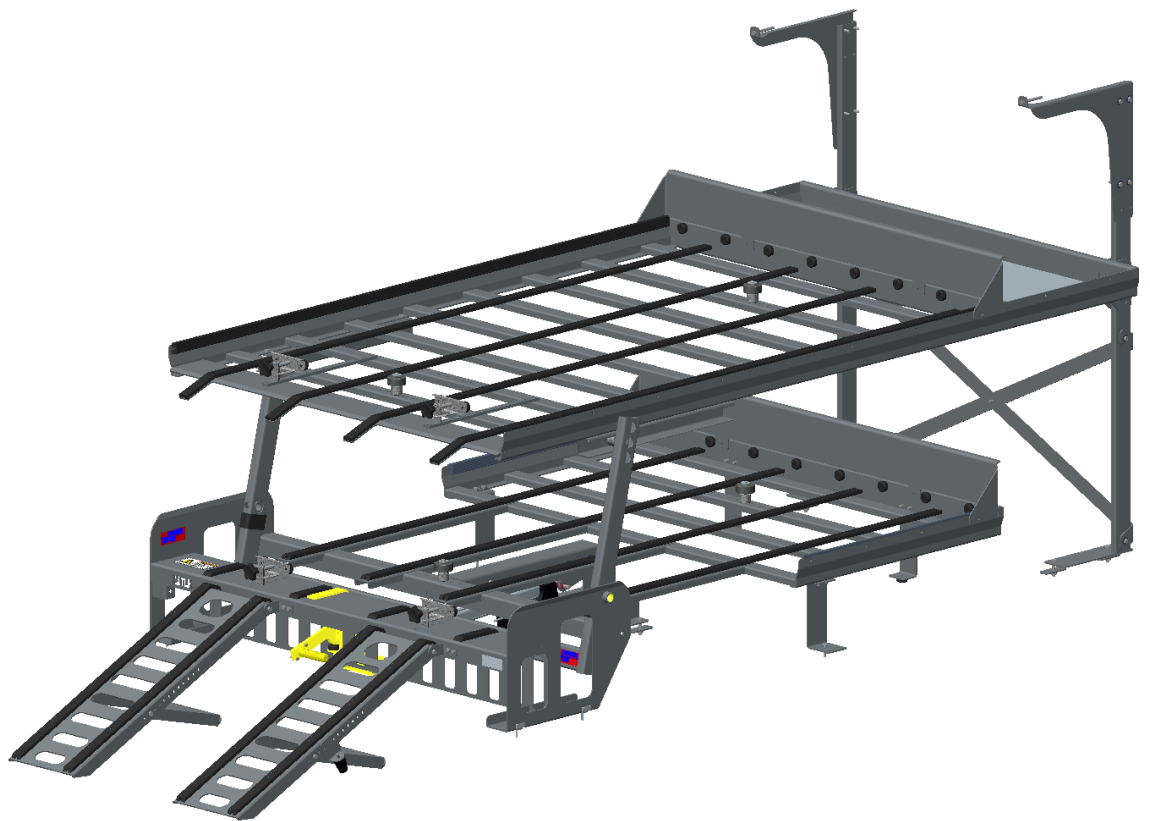


Link® MORTUARY EQUIPMENT

INSTALLATION INSTRUCTIONS

DD4000 (7225D000)



223 15th St. N.E.
Sioux Center, IA USA
51250-2120
www.linkmortuaryequipment.com

**QUESTIONS?
CALL CUSTOMER
SERVICE
1-800-248-3057**

The **Link DD4000** fits 2007 and newer Sprinter 2500 HC and SHC vans.

Link Mortuary Equipment, a division of Link Mfg., Ltd.
www.linkmortuaryequipment.com

72250067
AUG 3, 2023

IMPORTANT: IT IS IMPORTANT THAT THE ENTIRE INSTALLATION INSTRUCTIONS BE READ THOROUGHLY BEFORE PROCEEDING WITH THE INSTALLATION.







1. INTRODUCTION

Thank you for choosing a Link Mortuary Equipment DD4000. We want to help you get the best results from this deck system and to operate it safely. This manual contains information to assist in the installation and operation of your Link Mortuary Equipment DD4000. This instruction is intended solely for use with this product.

All information in this instruction is based on the latest information available at the time of printing. Link Manufacturing reserves the right to change its products or manuals at any time without notice.


Damaged components should be returned to Link with a pre-arranged Returned Materials Authorization (RMA) number through the Customer Service Department. The damaged component may then be replaced if in compliance with warranty conditions.


2. SAFETY SYMBOLS, TORQUE SYMBOL, and NOTES


 DANGER	DANGER indicates a hazardous situation which if not avoided, will result in death or serious injury.
 WARNING	WARNING indicates a potentially hazardous situation which, if not avoided, could result in death or serious injury.
 CAUTION	CAUTION indicates a potentially hazardous situation which, if not avoided, could result in minor or moderate injury.
 NOTICE	NOTICE indicates a potentially hazardous situation which, if not avoided, may result in property damage.
 TORQUE	TORQUE indicates named fasteners are to be tightened to a specified torque value.
NOTE:	A Note provides information or suggestions that help you correctly perform a task.
	The electrical symbol indicates the presence of electric shock hazards which, if not avoided, may result in injury to personnel or damage to equipment.

3. SAFE WORKING PRACTICES

 **CAUTION** When handling parts, wear appropriate gloves, eyeglasses, ear protection, and other safety equipment.


 **CAUTION** Practice safe lifting procedures.

 **CAUTION** The deck weldments are heavy, and can cause injury if lifted improperly or dropped. Consider size, shape, and weight of objects being moved.

 **CAUTION** Obtain help or the assistance of a crane when lifting heavy assemblies. Make certain the path of travel is clear.

4. OPERATION GUIDELINES

- 4.1. Vehicle must have a bulkhead installed contact Link Mortuary Equipment at (800)-248-3057 to order one if your vehicle is not equipped with one.
- 4.2. In order for this deck to operate properly, it must operate in the parameters specified by Link.
- 4.3. The installer must verify the vehicle is configured properly for the deck being added.
- 4.4. No alterations of any Link deck component is permitted without proper authorization from qualified Link personnel.
- 4.5. No welding of any deck component is permitted except when specified by Link.

 **CAUTION** The vehicle manufacturer should be consulted before any modifications are made to the frame of the vehicle.

 **CAUTION** Cutting or altering the frame in certain areas may affect the manufacturer's warranty.

 **WARNING** Proper tightening of fasteners is important to the performance and safety of the deck.

 **WARNING** Improperly tightened fasteners may cause unsafe conditions and accelerate wear .

5. PRE-INSTALLATION CHECKLIST

- Make certain the vehicle is placed on a level flat surface and that the parking brake is engaged.

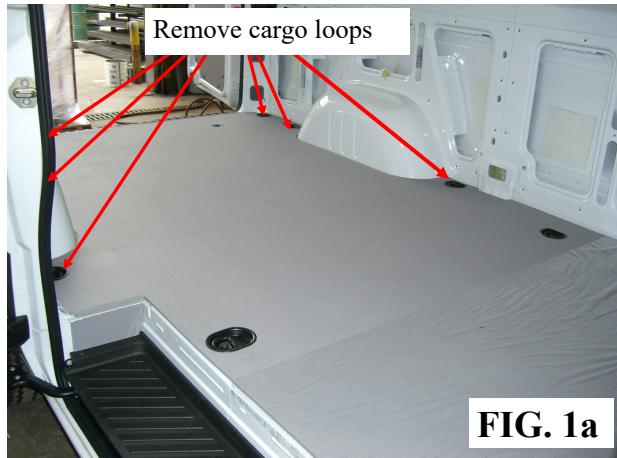
⚠ WARNING ⚠ Follow the vehicle manufacturer recommendations located in the owner's manual pertaining to accidental air bag deployment whenever performing service on system wiring.

⚠ WARNING ⚠ If in doubt, contact the vehicle manufacturer.

6. INSTALLATION PROCEDURE

The following steps are instructions for installing the DD4000C system. Refer to pictures and **Parts Lists** for details.

6.1 Remove the six rear cargo loops. (FIG. 1)



6.2 Set the main rear weldment in place. Center it about the 4 cargo loop holes. Loosely install the four supplied 8mm bolts and washers. Square the rear section with the rear of the van and tighten bolts. DO NOT OVER TIGHTEN. (FIG. 2)



6.3 Wiring:

6.3.1 Attach the black ground to the vehicle ground located above rear door using the prewired ring terminal.

6.3.2 String the system's red power wire from the switch through the taillight access cover on the drivers side. (You will need to cut a small hole in this cover to allow clearance for the wire.) Run the wire up the rear pillar to the roof. Then follow the existing wire loom to the bulk head behind the drivers seat. (FIG.3)

6.3.3 Then run the wire to the floor attaching it to the bulkhead using plastic loops and self tapping screws. (FIG.4)

6.3.4 Route the wire through the bulkhead to the area underneath the driver's seat. Then route it through the hole under the driver's seat and to the power supply. (FIG. 5)

Do not attach to power supply at this time.

6. INSTALLATION PROCEDURE (CONT')

6.3 Wiring:

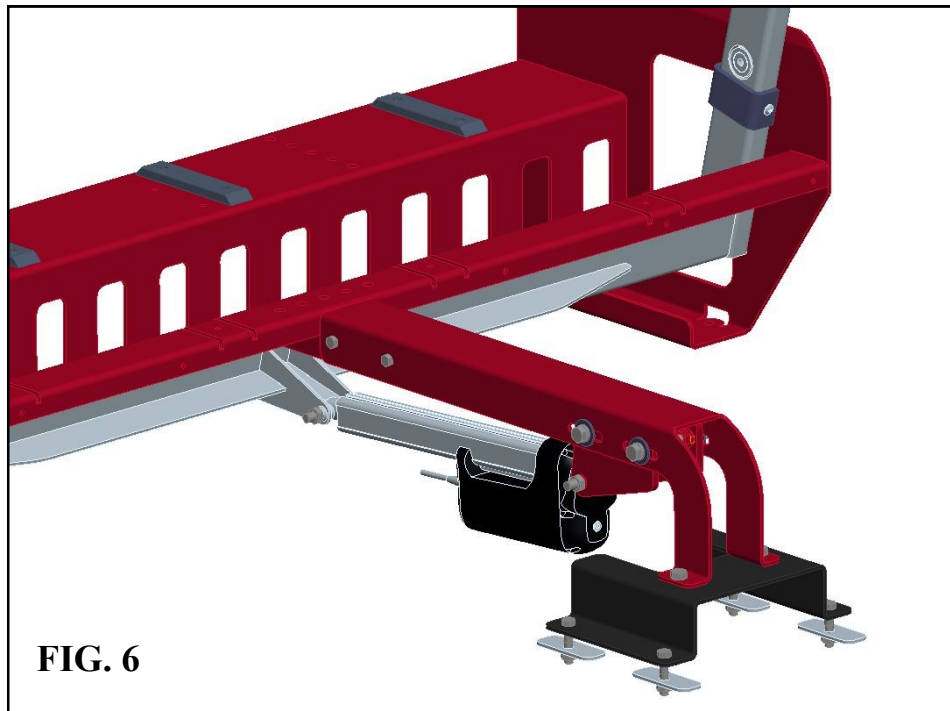
- 6.3.1 Attach the black ground to the vehicle ground located above rear door using the prewired ring terminal.
- 6.3.2 String the system's red power wire from the switch through the taillight access cover on the drivers side. (You will need to cut a small hole in this cover to allow clearance for the wire.) Run the wire up the rear pillar to the roof. Then follow the existing wire loom to the bulk head behind the drivers seat. **(FIG.3)**
- 6.3.3 Then run the wire to the floor attaching it to the bulkhead using plastic loops and self tapping screws. **(FIG.4)**
- 6.3.4 Route the wire through the bulkhead to the area underneath the driver's seat. Then route it through the hole under the driver's seat and to the power supply. **(FIG. 5)**

Do not attach to power supply at this time.



- 6.4 Attach the channel with the actuator (loosely pre-installed) to the rear weldment using the 4 provided fasteners. **(FIG.6)** Drill 7/16" holes through the floor (4x) and mount in place.

NOTE: Plug the actuator into the harness coming from the switch.

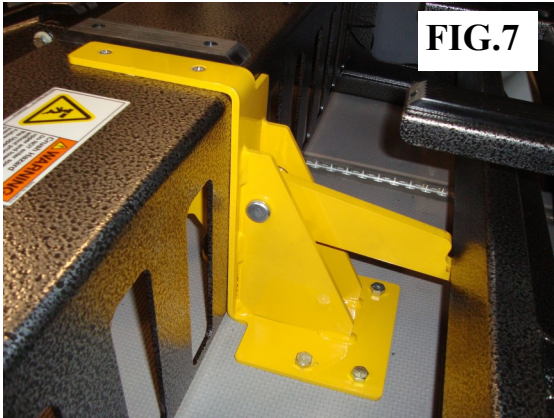


6. INSTALLATION PROCEDURE (CONT')

6.5 Fasten the yellow top deck latch assembly to the van floor. **(FIG.7)** Drill 7/16" holes through the floor (4x) and mount in place with provided fasteners and under-floor backer plate. **(FIG.8)**

⚠CAUTION Spare tire is mounted under floor in this area.

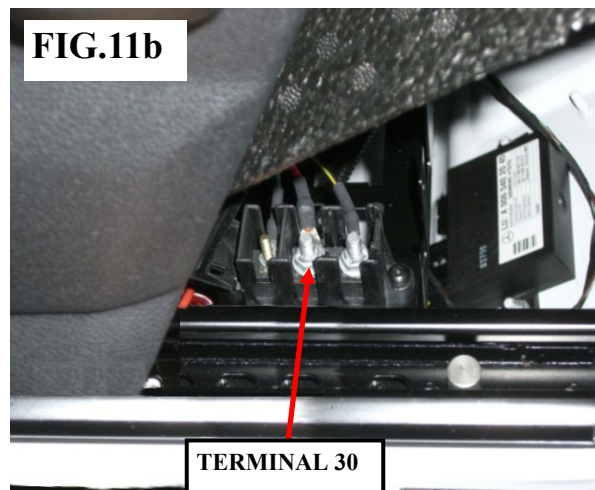
⚠CAUTION Take care to avoid damaging tire or rim.



6.6 Install the lift arm weldment. Assemble the flanged plastic bearings into the side plates. Hold the lift arm in place and slide the pivot pins through the lift arm into the bushings from the inside. Lock the pins in place using the set screws and jam nuts. **(FIG.9)** Then connect to the actuator using the provided bolt and lock nut. **(FIG.10)**



6.7 Using the provided ring terminal, hook up the power wire to Terminal 30 (center post) under the drivers seat. **(FIG.11)**



6. INSTALLATION PROCEDURE (CONT')

6.7 Test the actuator for function by toggling the switch up and down.

Be sure to raise and hold the yellow handle to disengage the top deck latch before running the lift arm down.

6.8 Secure the actuator wires to the rear weldment using cable ties.

6.9 Attach the two legs with the bumpers to the front of the bottom deck with the bumpers facing forward of the deck. (FIG.12)

6.10 Attach the two side legs to the bottom deck with the bracket leg facing outboard. (FIG.13)



FIG.12

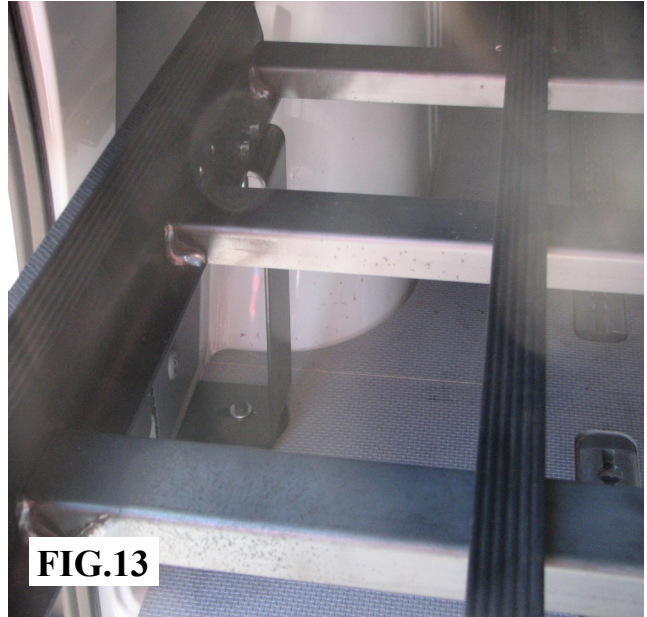


FIG.13

6.11 Set the bottom deck and the four connecting channels into the van.

6.12 Install the glide strips on the bottom deck.

6.13 Attach the two side legs to the floor of the vehicle using the holes for the cargo loops and 8mm bolts supplied

6.14 Set in the front legs and bolt together with the cross straps. (FIG.14)

NOTE: Do not bolt in place at this time.



FIG.14

6.15 Set in the top deck and install the front pivot bolts.(FIG.15)

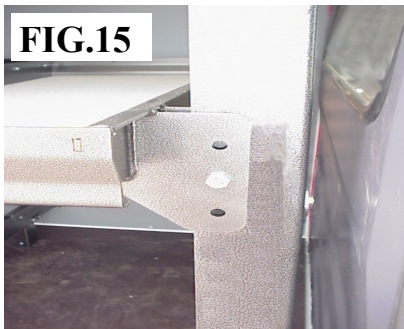


FIG.15

NOTE: Use middle hole for low roof vans, and the bottom hole for high roof vans the top hole may also be used on low roof vans where more room is necessary on top. The bearing in the lift arm will need to be moved to the corresponding hole. (FIG.16)

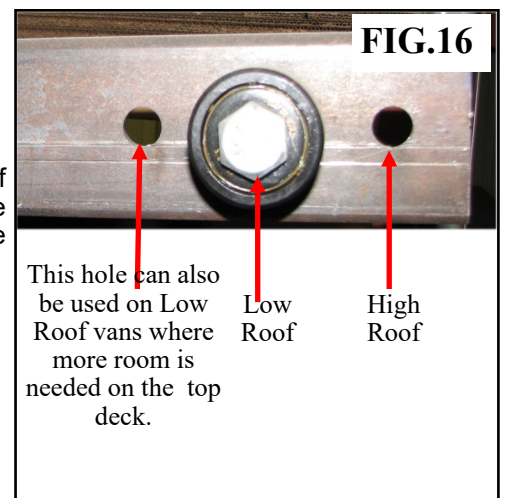


FIG.16

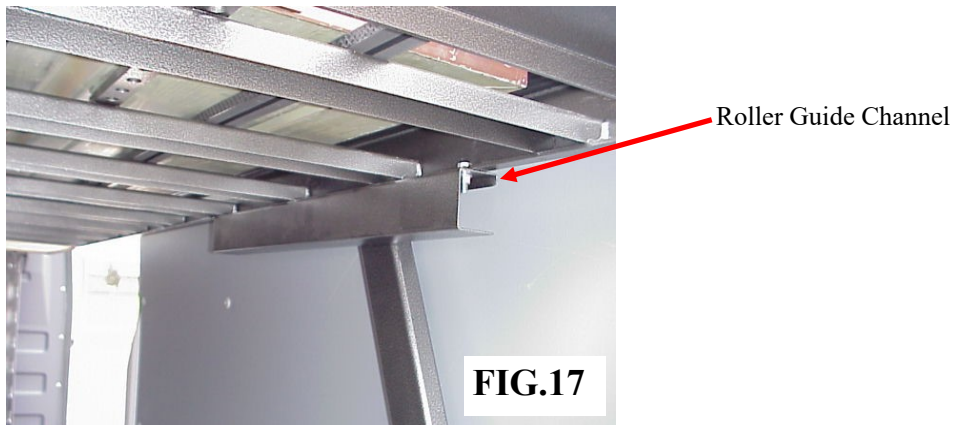
This hole can also be used on Low Roof vans where more room is needed on the top deck.

Low Roof

High Roof

6. INSTALLATION PROCEDURE (CONT')

6.15 Install the top deck roller guide channels. (FIG.17)

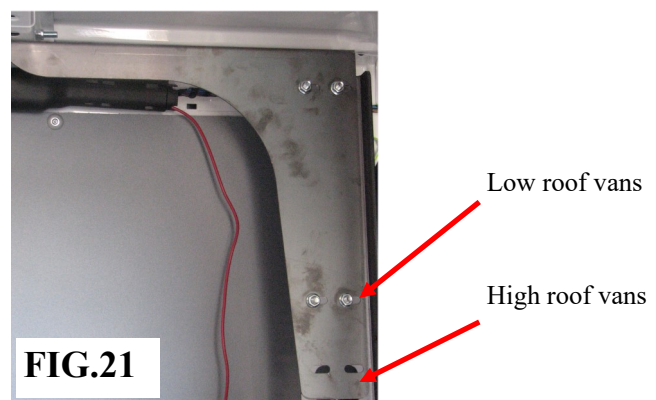


6.16 Center the front legs L to R (the edge of the plate on the front leg should be even with the edge of the side step). The legs should be about 2" from the bulkhead at the floor (make sure they are at the same distance.) Drill 7/16" hole through the floor (4x) and bolt in place. (FIGS. 18&19)



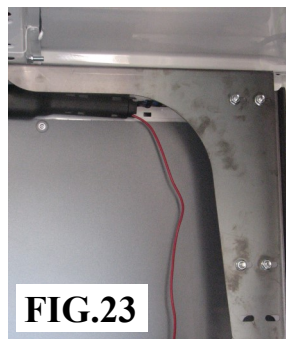
6.17 Loosely attach the front top brackets to the front legs, then attach to the roof cross member. A 3/8" hole will need to be drilled (2x). The holes should be 5.00" outward from the outermost holes in the roof cross member. (FIG.20)

NOTE: For high-roof vans, the brackets should be placed in the upper set of holes. For low-roof vans the bracket should be mounted in the lower set of holes. (FIG.21)



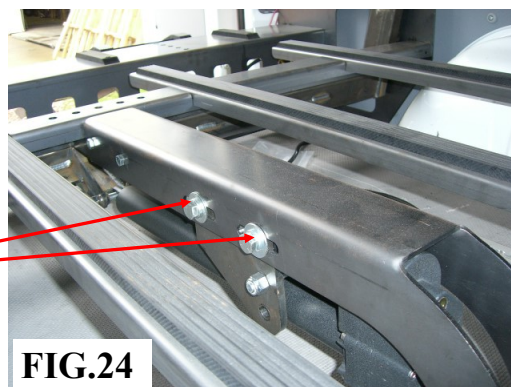
6. INSTALLATION PROCEDURE (CONT')

- 6.18 With the top deck lowered, align the rear of the deck correctly over the lower deck, then tighten the 4 fasteners that tie the roof brackets to the front legs. (FIG. 22&23)

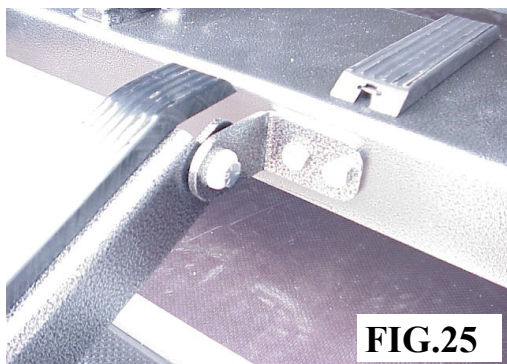


- 6.19 Adjust the actuator to the correct position (Suggestion: Place a 1" thick spacer between the decks with the actuator fully extended) and tighten the 4 actuator bolts. (FIG.24)

Actuator
Bolts
(2 per side)



- 6.20 Attach the ramps to the rear of the bottom deck. (FIG. 25&26)

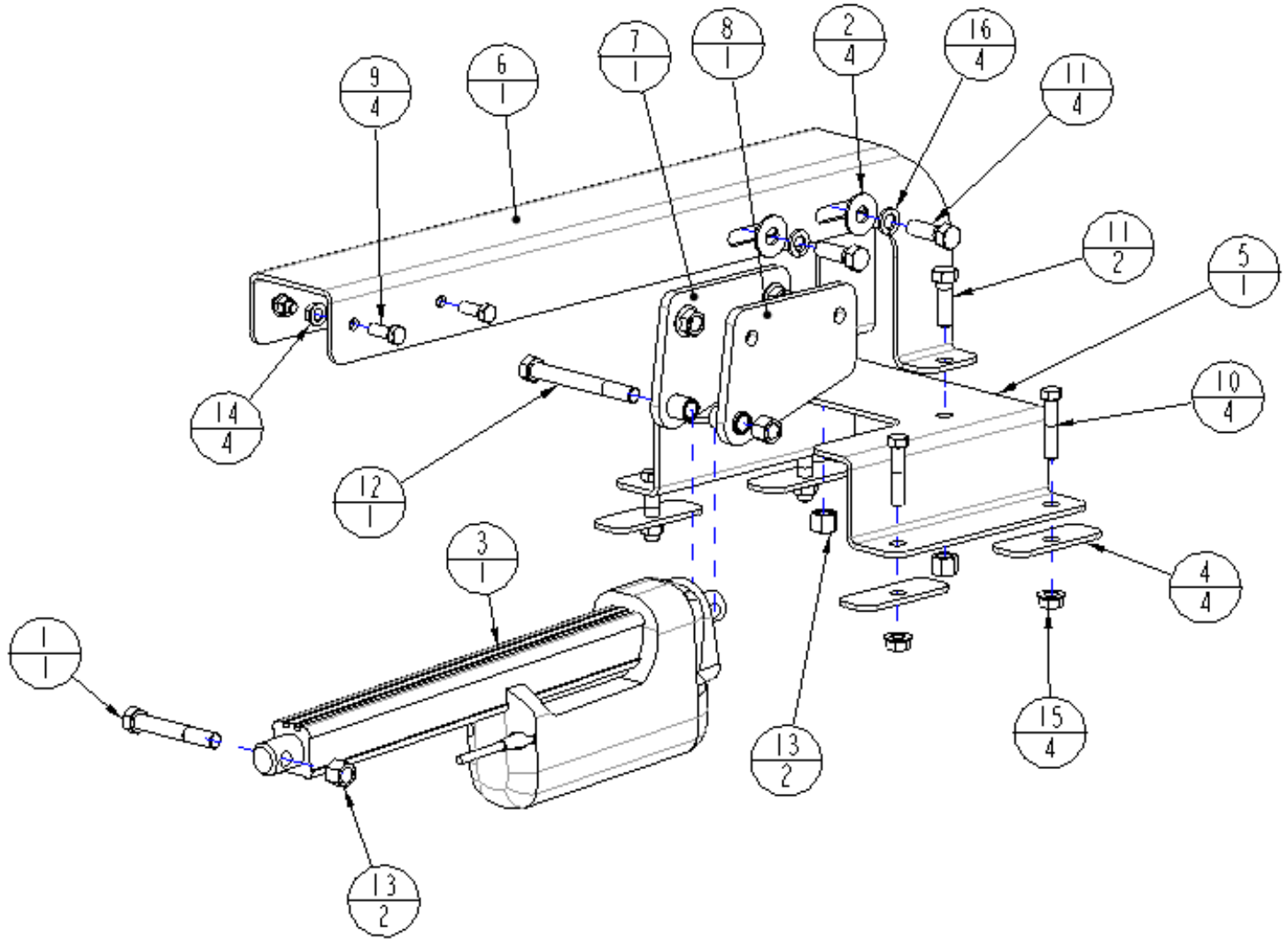


- 6.21 Attach the bumpers to the ramps. Position the bumpers so the doors contact them when they are close. (FIG.27&28)



DD4000 PARTS

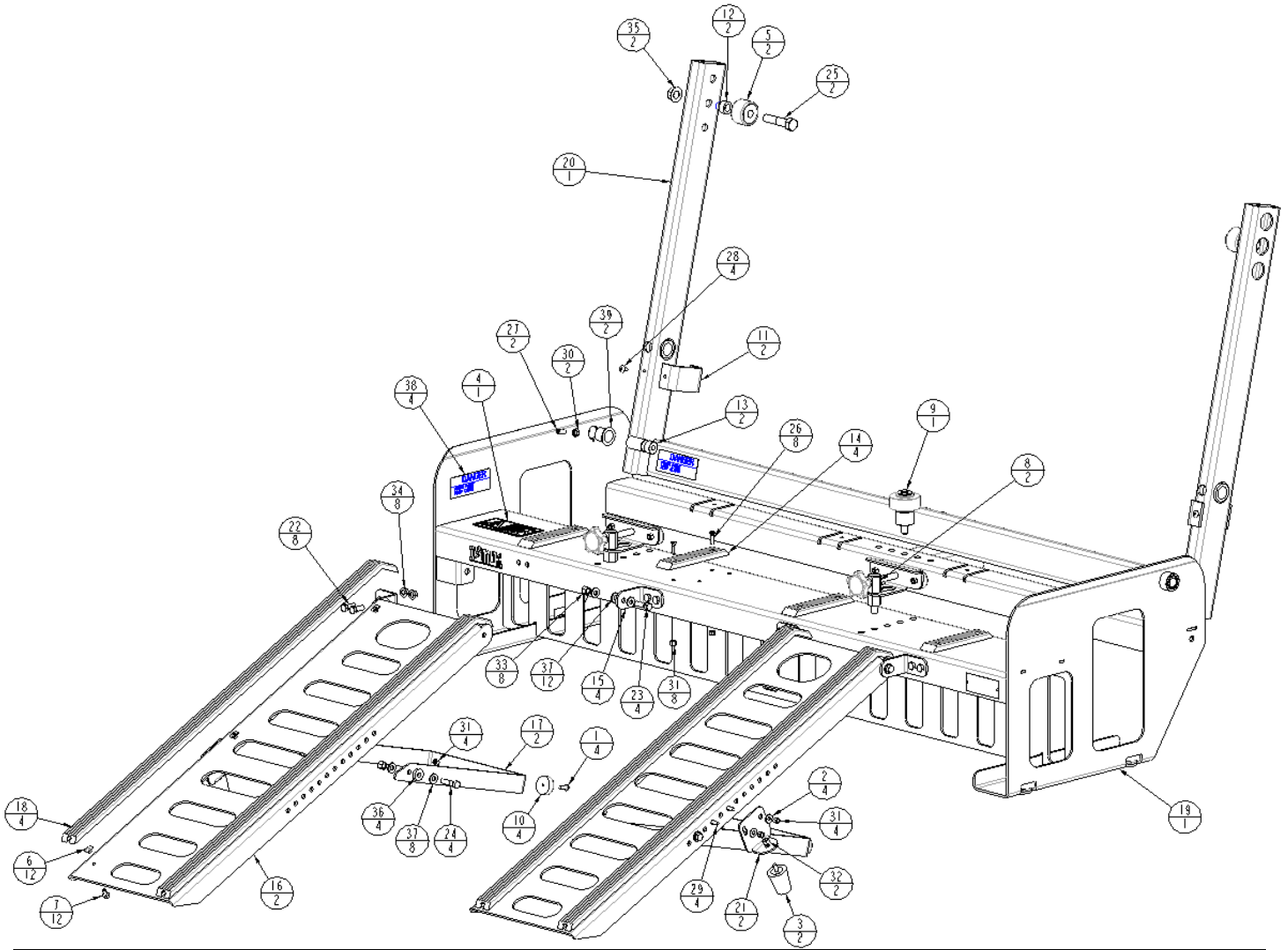
Actuator Mount Assembly



ITEM	PART #	DESCRIPTION	QTY
1	14011628	1/2 X 3 1/2 UNC HEX CAP SCR (GR 5)	1
2	14871600	1/2 TYPE A PLAIN WASHER	4
3	15040314	ACTUATOR, 12V, 300MM STROKE, 6800N	1
4	72250052	PLATE-WASHER	4
5	72252018	BRACKET-MOUNT	1
6	72252030	CHANNEL-MOUNT, ACTUATOR	1
7	72252107	WELDMENT-MOUNT, ACTUATOR	1
8	72252108	WELDMENT-MOUNT, ACTUATOR	1
9	14011208	3/8 X 1 UNC HEX CAP SCR (GR 5)	4
10	14011416	7/16 X 2 UNC HEX CAP SCR (GR 5)	4
11	14011612	1/2 X 1 1/2 UNC HEX CAP SCR (GR 5)	6
12	14011636	1/2 X 4 1/2 UNC HEX CAP SCR (GR 5)	1
13	14781600	1/2 UNC HEX NYLOCK NUT (GR B)	4
14	14801200	3/8 UNC SERRATED FLANGE NUT	4
15	14801400	7/16 UNC SERRATED FLANGE NUT	4
16	14851600	1/2 LOCK WASHER	4

DD4000 PARTS

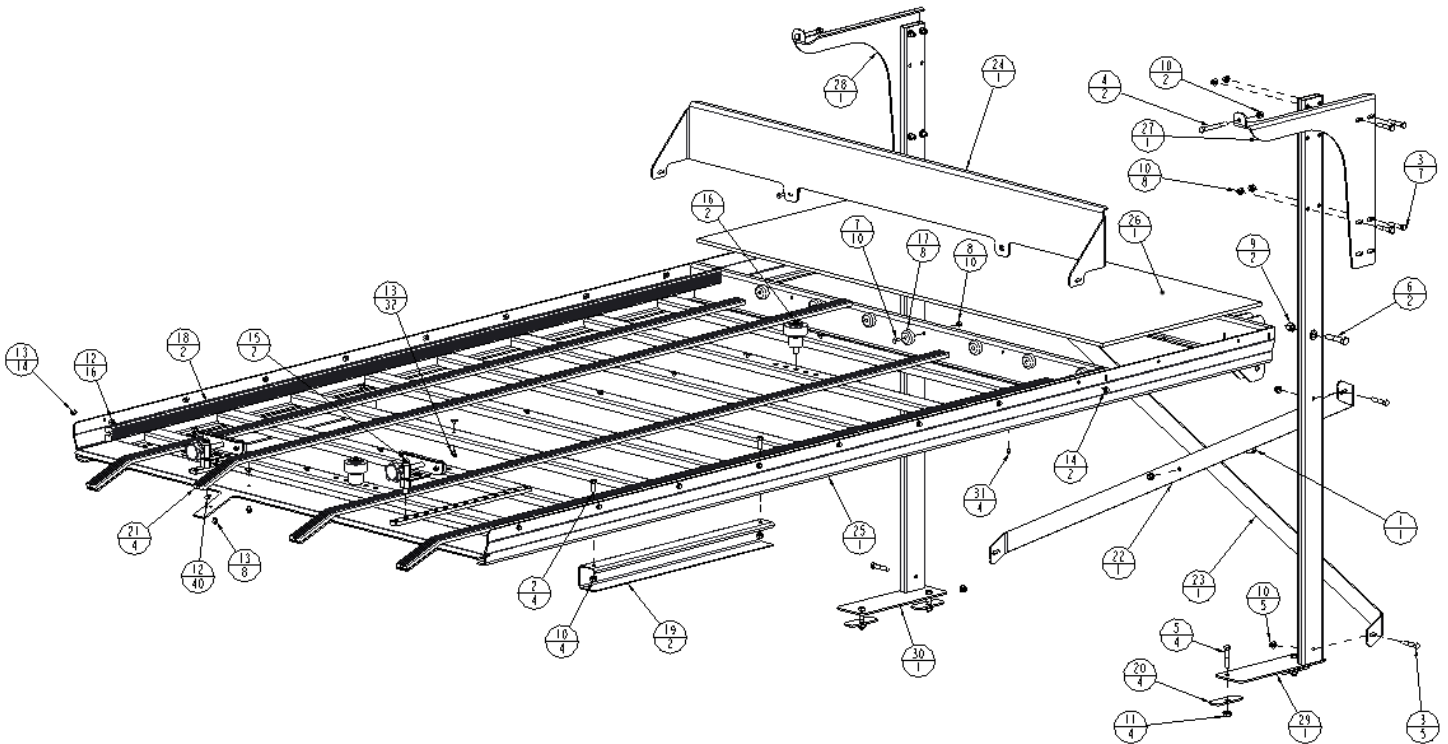
Rear Weldment Assembly



ITEM	PART #	DESCRIPTION	QTY	ITEM	PART #	DESCRIPTION	QTY
1	14420806	1/4 X 3/4 UNC PAN HD PH MACH SCR, ZINC	4	21	72252106	BRACKET-BUMPER,RAMP	2
2	14870800	1/4 TYPE A PLAIN WASHER	4	22	14011208	3/8 X 1 UNC HEX CAP SCR (GR 5)	8
3	15000005	BUMPER-NEOPRENE RUBBER	2	23	14011210	3/8 X 1 1/4 UNC HEX CAP SCR (GR 5)	4
4	15001375	LABEL-WARNING, DOUBLE DECK	1	24	14011212	3/8 X 1 1/2 UNC HEX CAP SCR (GR 5)	4
5	15040312	ROLLER-TRACK	2	25	14012022	5/8 X 2 3/4 UNC HEX CAP SCR (GR 5)	2
6	15060054	1/4-20 X 1/4 SLAB BASE WELD NUT	16	26	14150808	1/4 X 1 UNC SLTD FT HD CSK MACH SCR	8
7	15060418	1/4 X 1/2 FLANGE HEAD BOLT	16	27	14401207	3/8 X 7/8 UNC HEX SOCKET SET SCREW	2
8	15070275	PIN-BIER, ADJUSTABLE	2	28	144C0804	1/4 X 1/2 UNC TRUSS HD PH MACH SCR, SS	4
9	15070303	ROLLER-BIER	1	29	144C0806	1/4 X 3/4 UNC TRUSS HD PH MACH SCR, SS	4
10	15070407	BUMPER-RECESSED, 1.50 O.D. X .63 H	4	30	14741200	3/8 UNC HEX JAM NUT	2
11	15070477	BUMPER-.25 X 2.00 X 5.63	2	31	14780800	1/4 UNC HEX NYLOCK NUT (GR B)	16
12	72250047	BUSHING-SPACER	2	32	14781000	5/16 UNC HEX NYLOCK NUT (GR B)	2
13	72250048	PIN-PIVOT	2	33	14781200	3/8 UNC HEX NYLOCK NUT (GR B)	8
14	72250065	GLIDE STRIP	4	34	14801200	3/8 UNC SERRATED FLANGE NUT	8
15	72252019	BRACKET-MOUNT, RAMP	4	35	14802003	5/8 UNC TOP LOCK FL NUT (GR G)	2
16	72252020	PLATE-RAMP	2	36	14910003	NYLON WASHER	4
17	72252021	LEG-RAMP	2	37	14916405	WASHER-NYLON	20
18	72252022	GLIDE STRIP	4	38	15001311	DECAL-PINCH POINT	4
19	72252100	WELDMENT-BOTTOM	1	39	15040092	FLANGED BEARING (THOMSON TYPE 6)	2
20	72252101	ARM-LIFT	1				

DD4000 PARTS

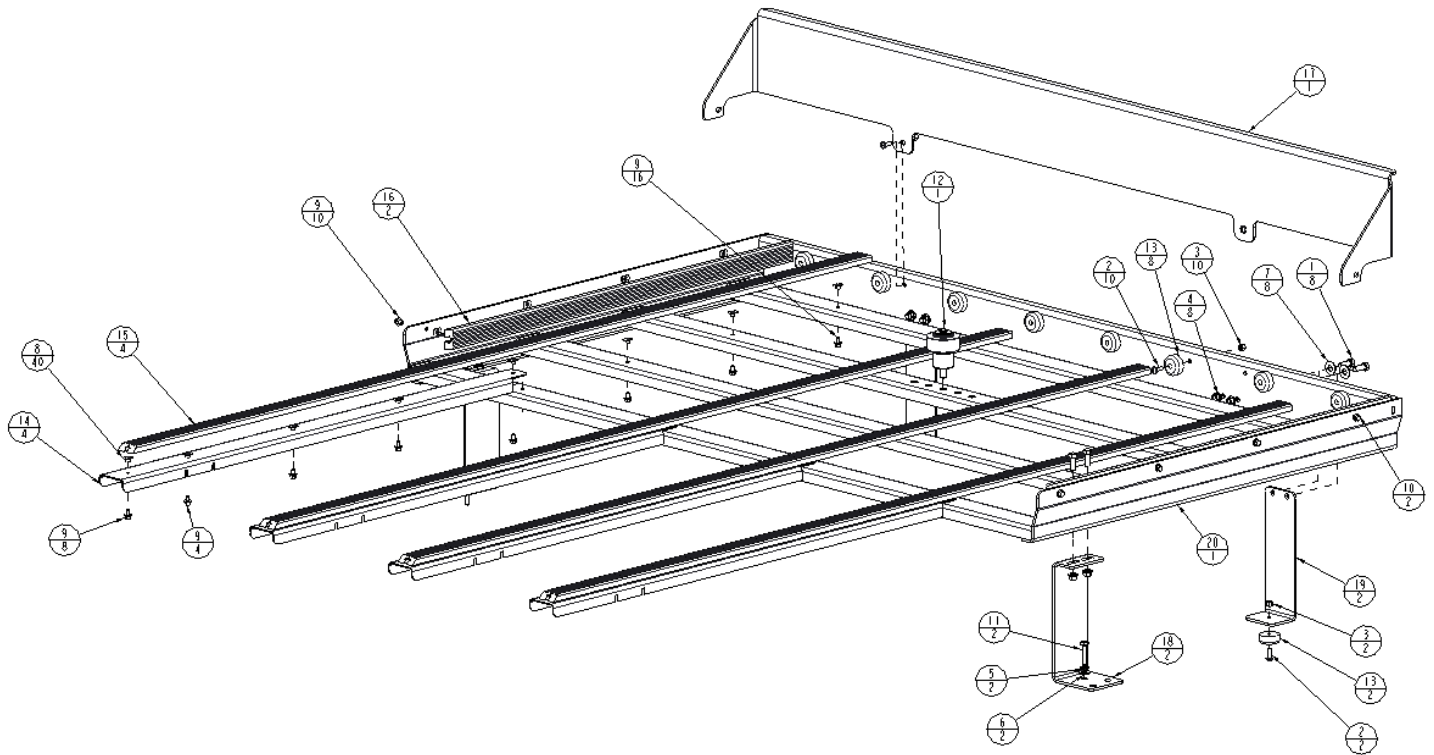
Upper Deck Assembly



ITEM	PART #	DESCRIPTION	QTY	ITEM	PART #	DESCRIPTION	QTY
1	14011206	3/8 X 3/4 UNC HEX CAP SCR (GR 5)	1	17	15070407	BUMPER-RECESSED, 1.50 O.D. X .63 H	8
2	14011208	3/8 X 1 UNC HEX CAP SCR (GR 5)	4	18	72250036	GLIDE STRIP	2
3	14011216	3/8 X 2 UNC HEX CAP SCR (GR 5)	12	19	72250045	CHANNEL-TRACK, ROLLER	2
4	14011228	3/8 X 3 1/2 UNC HEX CAP SCR (GR 5)	2	20	72250052	PLATE-WASHER	4
5	14011416	7/16 X 2 UNC HEX CAP SCR (GR 5)	4	21	72250063	GLIDE STRIP	4
6	14011620	1/2 X 2 1/2 UNC HEX CAP SCR (GR 5)	2	22	72250070	STRAP-BRACE	1
7	14420806	1/4 X 3/4 UNC PAN HD PH MACH SCR, ZINC	10	23	72250071	STRAP-BRACE	1
8	14780800	1/4 UNC HEX NYLOCK NUT (GR B)	10	24	72250074	CATCH-FRONT, UPPER	1
9	14781600	1/2 UNC HEX NYLOCK NUT (GR B)	2	25	72251009	WELDMENT-DECK, TOP	1
10	14801200	3/8 UNC SERRATED FLANGE NUT	19	26	72252010	BOARD-DECK	1
11	14801400	7/16 UNC SERRATED FLANGE NUT	4	27	72252014	BRACKET-ROOF	1
12	15060054	1/4-20 X 1/4 SLAB BASE WELD NUT	56	28	72252015	BRACKET-ROOF	1
13	15060418	1/4 X 3/8 FLANGE HEAD BOLT	54	29	72252112	POST-SUPPORT, DECK	1
14	15060420	1/4 X 5/8 FLANGE HEAD BOLT	2	30	72252113	POST-SUPPORT, DECK	1
15	15070275	PIN-BIER, ADJUSTABLE	2	31	14590C06	NO 8 X .375 CR PN HD TAPPING SCR	4
16	15070303	ROLLER-BIER	2				

DD4000 PARTS

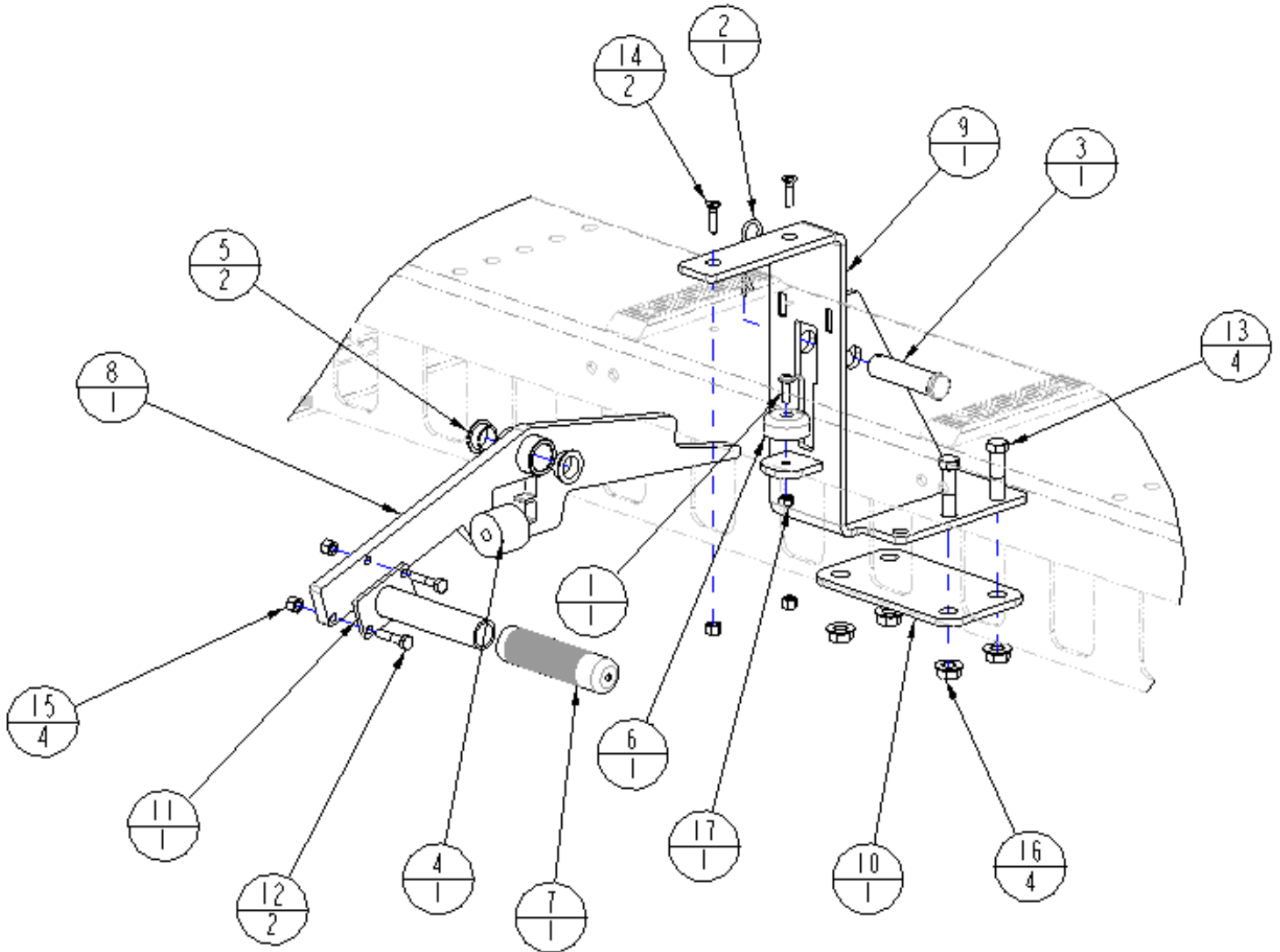
Lower Deck Assembly



ITEM	PART #	DESCRIPTION	QTY	ITEM	PART #	DESCRIPTION	QTY
1	14011208	3/8 X 1 UNC HEX CAP SCR (GR 5)	8	11	15060450	HEX CAP SCREW, M8 X 1.25 X 40, CLASS 10.9	2
2	14420806	1/4 X 3/4 UNC PAN HD PH MACH SCR, ZINC	12	12	15070303	ROLLER-BIER	1
3	14780800	1/4 UNC HEX NYLOCK NUT (GR B)	12	13	15070407	BUMPER-RECESSED, 1.50 O.D. X .63 H	10
4	14801200	3/8 UNC SERRATED FLANGE NUT	8	14	72250039	CHANNEL-SUPPORT, GLIDE	4
5	14851000	5/16 LOCK WASHER	2	15	72250049	GLIDE STRIP	4
6	14871000	5/16 TYPE A PLAIN WASHER	2	16	72250050	GLIDE STRIP	2
7	14871200	3/8 TYPE A PLAIN WASHER	8	17	72250075	CATCH-FRONT, LOWER	1
8	15060054	1/4-20 X 1/4 SLAB BASE WELD NUT	40	18	72252016	BRACKET	2
9	15060418	1/4 X 3/8 FLANGE HEAD BOLT	38	19	72252017	BRACKET-SUPPORT, DECK	2
10	15060420	1/4 X 5/8 FLANGE HEAD BOLT	2	20	72252105	DECK-BOTTOM	1

DD4000 PARTS

Deck Latch Assembly



ITEM	PART #	DESCRIPTION	QTY
1	14420806	1/4 X 3/4 UNC PAN HD PH MACH SCR, ZINC	1
2	14490002	PIN-COTTER, 1/8 X 2 1/2	1
3	14510004	PIN-CLEVIS, 3" X 3/4"	1
4	15000929	BUMPER-SPRING	1
5	15040098	BUSHING-PIVOT, NYLON, 3/8	2
6	15070407	BUMPER-RECESSED, 1.50 O.D. X .63 H	1
7	15070476	GRIP-VINYL, ROUND	1
8	72251031	WELDMENT-HANDLE, LATCH	1
9	72251032	WELDMENT-MOUNT, LATCH	1
10	72251033	PLATE-BACKING	1
11	78552213	HANDLE-RAMP	1
12	14010810	1/4 X 1 1/4 UNC HEX CAP SCR (GR 5)	2
13	14011416	7/16 X 2 UNC HEX CAP SCR (GR 5)	4
14	14150808	1/4 X 1 UNC SLTD FTHD CSK MACH SCR	2
15	14780800	1/4 UNC HEX NYLOCK NUT (GR B)	4
16	14801400	7/16 UNC SERRATED FLANGE NUT	4
17	14840810	1/4 UNC HEX CTR LOCK NUT, SS	1



223 15TH ST. NE, SIOUX CENTER, IA 51250
1-800-248-3057
www.linkmortuaryequipment.com