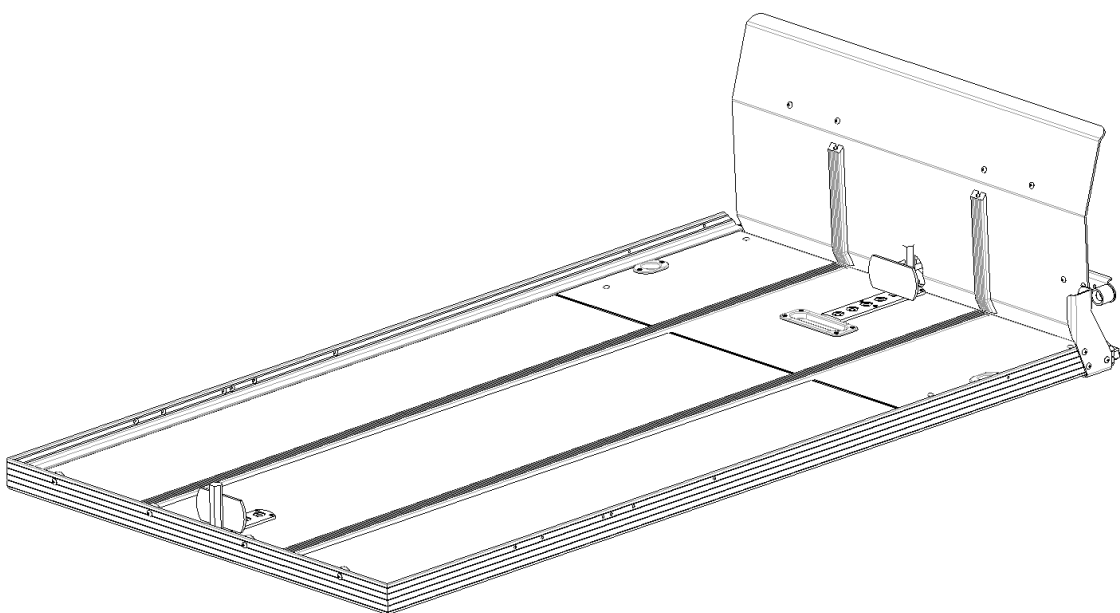




INSTALLATION INSTRUCTIONS

SS150 SINGLE DECK FORD EXPEDITION EL/MAX



223 15th St. N.E.
Sioux Center, IA USA
51250-2120
www.linkmortuaryequipment.com

**QUESTIONS?
CALL CUSTOMER
SERVICE
1-800-248-3057**

This **Link SS150** fits 2007+ Ford Expedition EL.

Estimated weight: 135 lbs.

Link Mortuary Equipment, a division of Link Mfg., Ltd.
www.linkmortuaryequipment.com

71353104
AUG 1, 2023

Introduction

Thank you for choosing a Link Mortuary Equipment SS150/SS150XL single deck system. We want to help you to get the best results from the deck and to operate it safely. This manual contains information to introduce you to the Link Mortuary Equipment SS150/SS150XL and to assist you with its installation. This manual is intended solely for use with this product.

All information in this manual is based on the latest information available at the time of printing. Link reserves the right to change its products or manuals at any time without notice. Contact Link Mortuary Equipment at (800) 248-3057 for information on recent changes to products.

Defective or damaged components should be returned to Link with a pre-arrange Returned Goods Authorization (RGA) number through the Customer Service department. The defective or damaged component(s) may then be replaced if in compliance with warranty conditions.

Review the **Parts Lists** on **Pages 4, 5, and 6** to become familiar with the different components of the **SS150**. Be sure all items were included before beginning installation. A deck, bier pin, and ramp kit should be included.

Installation

- A. The **SS150** is shipped with the bier pin attached to the deck. Remove these items and set aside for later use.
- B. **The ramp assembly is installed backwards for shipping. To remove the ramp, position it in the raised position. One side of the ramp is held in place with a pressure-fit while the other is contained.** Remove the ramp by carefully lifting the ramp up until the hinge disengages. Slide the ramp away from the other hinge to disengage the ramp from the deck. Reverse and reinstall the ramp assembly as shown on Page 1.
- C. The installation of the SS150 requires the stowing of the second and third row of seats. Stow the seats in the stored position per owners manual.
- D. Position the deck inside the vehicle as far back as possible without the ramp interfering with with door in the closed position. Center the deck between the wheel wells (See Fig. 2 & 3 for details).
- E. Verify the deck location by checking the *ramp assembly* for function. Check for fit with the bumper and verify clearance with all parts of the vehicle. Reposition the deck if needed.



FIG. 2



FIG. 3

Installation (cont)

- F. The tie down straps come preassembled to the deck. Hook the tie down straps to the child seat tether anchors located under the second row of seats. (See Fig. 4 & 5 for details)
- G. Tighten both straps to securely hold the deck in place.
- H. Recheck the *ramp assembly* for proper operation.



FIG. 4



FIG. 5

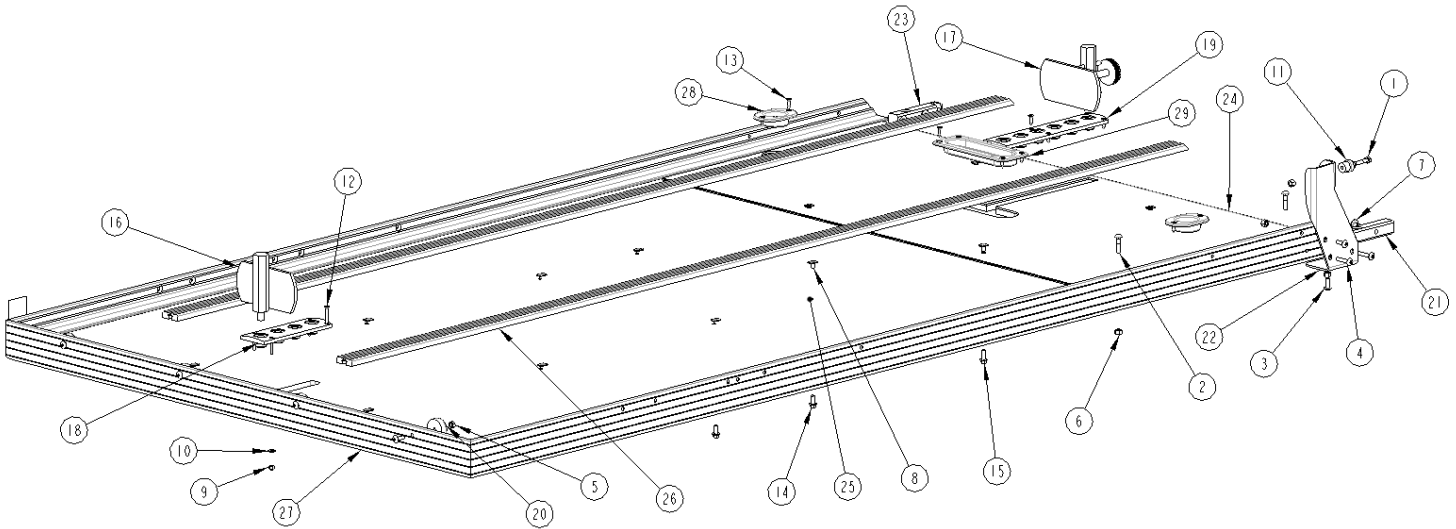


FIG. 6

Maintenance

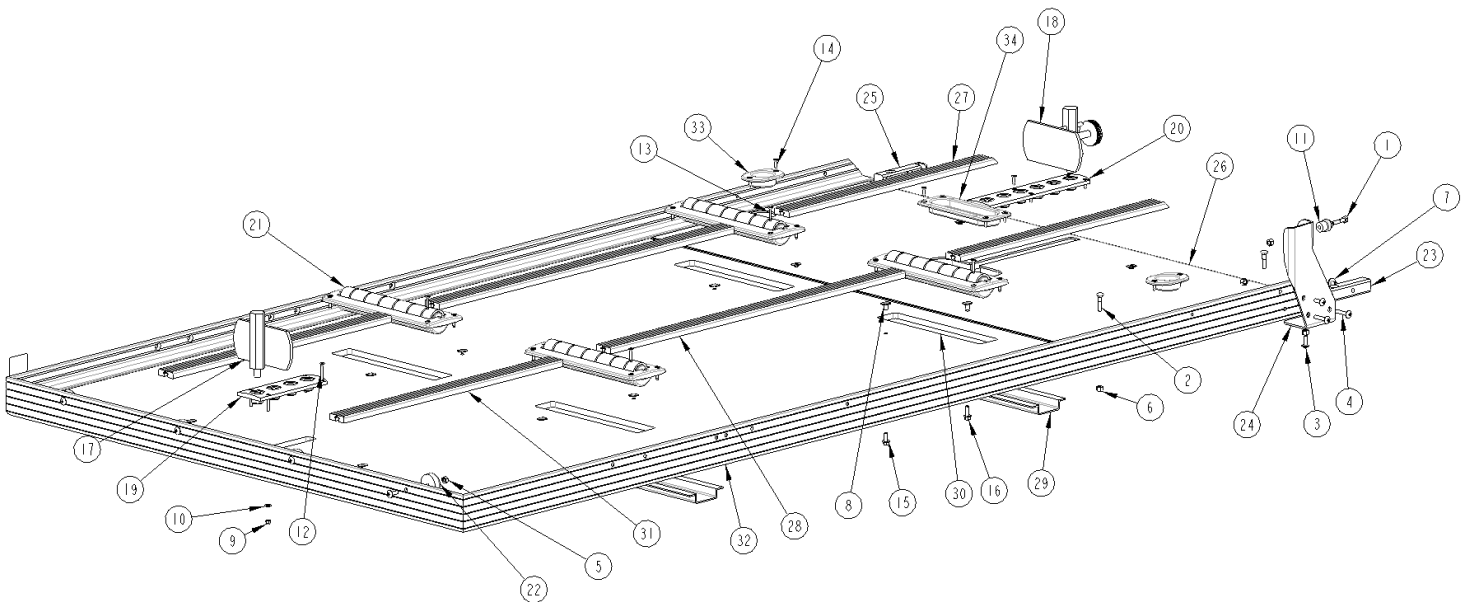
- The SS150 is designed for years of trouble-free operation with minimal maintenance. Regular cleaning of surfaces should be completed using soap and water or window cleaner.

PARTS LIST FOR SS150 SINGLE DECK (7124B003)



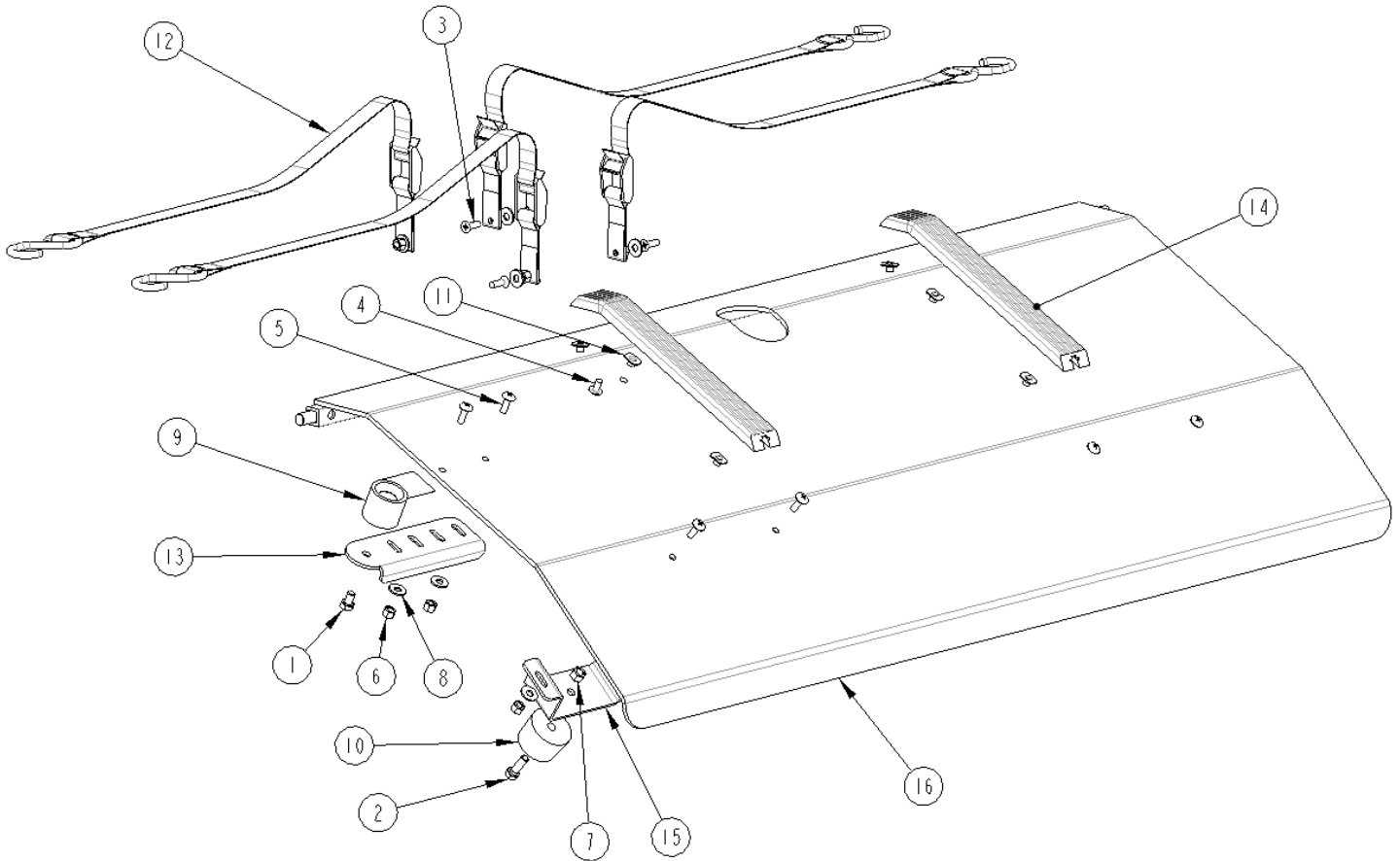
ITEM	DESCRIPTION	QTY	ITEM	DESCRIPTION	QTY
1	1/4 X 1 1/4 UNC HEX CAP SCR	1	16	BIER PIN-STATIONARY	1
2	1/4 X 1 1/4 UNC RND HD SQ NK BOLT	4	17	BIER PIN-ADJUSTABLE	1
3	1/4 X 3/4 UNC TRUSS HD PH MACH SCR	6	18	BIER PIN PLATE (4 HOLE)	1
4	1/4 X 1 1/4 UNC TRUSS HD PH MACH SCR	4	19	BIER PIN PLATE (6 HOLE)	1
5	1/4 UNC HEX NUT	4	20	BUMPER-RECESSED, 1.50 O.D. X .63 H	4
6	1/4 UNC HEX NYLOCK NUT	7	21	TUBE-MOUNT, RAMP	1
7	NUT 1/4-20 X 7/16 HT PROPELLER TEE	4	22	BRACKET-STOP, RAMP	1
8	1/4-20 X 7/16 SLAB BASE WELD NUT	12	23	TUBE-MOUNT, RAMP	1
9	10-24 NYLOCK NUT	4	24	REAR ANGLE GUARD	1
10	#10 SAE PLAIN WASHER	4	25	DECK BOARD	1
11	RAMP HOLDER, MALE END	1	26	GLIDE STRIP	2
12	#10 -24 X 1.25, PHIL FLAT HEAD M.S.	4	27	DECK WELDMENT	1
13	#10 X 3/4 SS FLAT HD TAP SCR	12	28	RECESSED COT CUP	2
14	1/4 X 5/8 FLANGE HEAD BOLT	8	29	SUPER SIZED RECESSED COT CUP	1
15	1/4 X 3/4 FLANGE HEAD BOLT	4			

PARTS LIST FOR SS150 XL SINGLE DECK (7124B002)



ITEM	DESCRIPTION	QTY	ITEM	DESCRIPTION	QTY
1	1/4 X 1 1/4 UNC HEX CAP SCR	1	18	BIER PIN-ADJUSTABLE	1
2	1/4 X 1 1/4 UNC RND HD SQ NK BOLT	4	19	BIER PIN PLATE (4 HOLE)	1
3	1/4 X 3/4 UNC TRUSS HD PH MACH SCR	6	20	BIER PIN PLATE (6 HOLE)	1
4	1/4 X 1 1/4 UNC TRUSS HD PH MACH SCR	4	21	CR60 CASKET ROLLER	4
5	1/4 UNC HEX NUT	4	22	BUMPER-RECESSED, 1.50 O.D.	4
6	1/4 UNC HEX NYLOCK NUT	7	23	TUBE-MOUNT, RAMP	1
7	NUT 1/4-20 X 7/16 HT PROPELLER TEE	4	24	BRACKET-STOP, RAMP	1
8	1/4-20 X 7/16 SLAB BASE WELD NUT	12	25	TUBE-MOUNT, RAMP	1
9	10-24 NYLOCK NUT, SS	4	26	REAR ANGLE GUARD	1
10	#10 SAE PLAIN WASHER	4	27	GLIDE STRIP	2
11	RAMP HOLDER, MALE END	1	28	GLIDE STRIP	2
12	#10 -24 X 1 1/4, PHIL FLAT HEAD MACH SCR	4	29	FLOOR SPLICE	2
13	#10 X 1 SS FLAT HD TYPE B TAP SCR	16	30	DECK BOARD	1
14	#10 X 3/4 SS FLAT HD TAP SCR	12	31	GLIDE STRIP	2
15	1/4 X 5/8 FLANGE HEAD BOLT	8	32	DECK WELDMENT	1
16	1/4 X 3/4 FLANGE HEAD BOLT	4	33	RECESSED COT CUP	2
17	BIER PIN-STATIONARY	1	34	SUPER SIZED RECESSED COT CUP	1

EXPEDITION EL/MAX RAMP KIT (71352113)



ITEM	DESCRIPTION	QTY
1	5/16 X 1/2 UNC HEX CAP SCR (GR 5)	1
2	5/16 X 1 UNC HEX CAP SCR (GR 5)	2
3	1/4 X 3/4 UNC PHIL HD CSK MACH SCR	4
4	1/4 X 1/2 UNC TRUSS HD PH MACH SCR, SS	6
5	1/4 X 3/4 UNC TRUSS HD PH MACH SCR, SS	6
6	1/4 UNC HEX NYLOCK NUT (GR B)	10
7	5/16 UNC HEX NYLOCK NUT (GR B)	2
8	1/4 TYPE A PLAIN WASHER	12
9	BUMPER-JOUNCE, 1.25	2
10	RAMP HOLDER, FEMALE END	1
11	1/4-20 X 1/4 SLAB BASE WELD NUT	6
12	RETENTION STRAP	4
13	BRACKET-STOP, RAMP	1
14	GLIDE STRIP	2
15	BRACKET-SUPPORT	2
16	RAMP WELDMENT	1

SPECIFICATIONS for SS150 Single Deck for Ford Expedition EL

DECK CAPACITY:

Maximum Load Length with Ramp Installed	87.5"
Maximum Load Length without Ramp Installed	90"
Maximum Load Width	47.25"

VEHICLE REQUIREMENTS:

Overall Deck Length (with Ramp up)	90.75"
Overall Deck Width	48.0"

WEIGHT OF DECK (including ramp)	135 lbs.
------------------------------------	-------	-----------------

APPROXIMATE HEIGHT OF DECK FROM GROUND*	36 "
--	-------	-------------

BIER PIN AVAILABLE	Yes
--------------------	-------	------------

REAR WEAR PLATE	Yes
-----------------	-------	------------

REMOVABLE RAMP	Yes
----------------	-------	------------

TIE DOWN METHOD	Child-safety seat tether anchors
-----------------	-------	---

INSTALLATION TIME	20 minutes
-------------------	-------	-------------------

WARRANTY	1 Year
----------	-------	---------------

*Height may vary depending on vehicle.



223 15TH ST. NE, SIOUX CENTER, IA 51250
1-800-248-3057
www.linkmortuaryequipment.com